

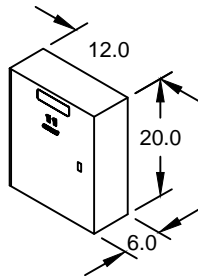
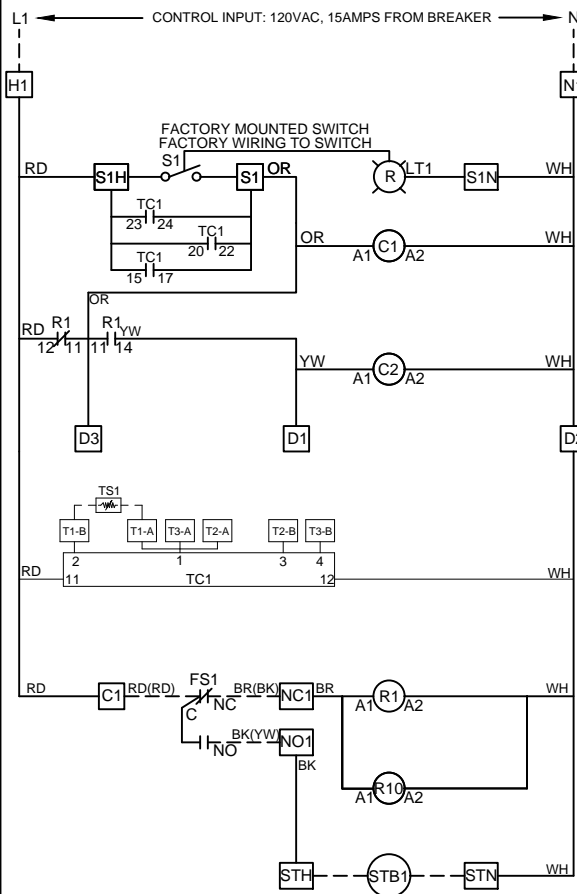


# Field Wiring Diagram

## Kitchen Fan Control Center Electrical Prewire Package

### SYSTEM DRAWING NOTE

For additional information call PDI at 1-800-333-5151

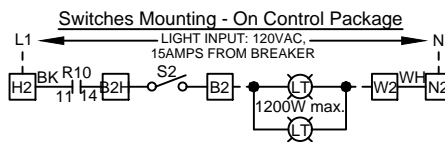
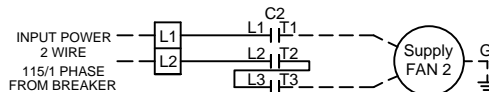
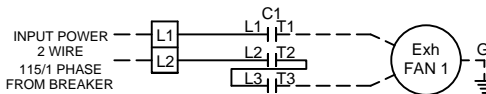


### CONTROL PANEL

Installation Location:

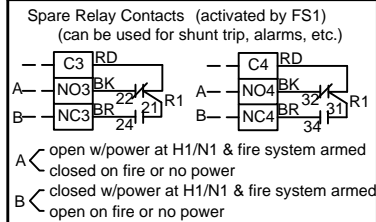
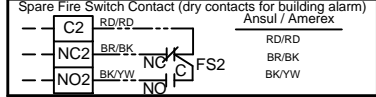
Ship Loose

"LIGHTS" SWITCH  
"FAN" SWITCH



Panel Mark:							
Hood Mark(s):	Sample						
Serial Number:							
Model:							
Motor	Fan Mark	HP	Volt	PH	FLA	Wire	Breaker
F1-E	EF-1	1	115	1	16.0	14 ga	30 amp
F2-S	SF-1	1	115	1	16.0	14 ga	30 amp

<input type="checkbox"/> Qty. Fan Switches (0-3)	<input checked="" type="checkbox"/> Exhaust in Fire
<input type="checkbox"/> Qty. Light Switches (0-3)	<input checked="" type="checkbox"/> MUA Interface
<input type="checkbox"/> Qty. Temp. Switches (0-1)	<input checked="" type="checkbox"/> Lights Out in Fire
<input type="checkbox"/> One Switch for L & F	<input checked="" type="checkbox"/> Fire Relay (#1)
<input checked="" type="checkbox"/> Digital Temperature Interlock	<input checked="" type="checkbox"/> Extra Fire Relay (#2)
<input type="checkbox"/> Mounted Sensors - Factory	<input checked="" type="checkbox"/> Extra Fire Relay (#3)
<input type="checkbox"/> Mounted Sensors - Field	<input type="checkbox"/> DPDT Relay w/SF
<input type="checkbox"/> Heat Switch / Tempering SW	<input type="checkbox"/> DPDT Relay w/EF
<input type="checkbox"/> Cool Switch	<input type="checkbox"/> Off Delay Relay
<input type="checkbox"/> AD Switch	<input type="checkbox"/> SF Failure Light
<input type="checkbox"/> Remote Switches	<input type="checkbox"/> EF Failure Light
<input type="checkbox"/> Audible Alarm	<input type="checkbox"/> Fan Failure Light (Appl.)
<input type="checkbox"/> Gas Reset / Gas Off w/Fans	<input type="checkbox"/> Aux. Supply Contact
<input type="checkbox"/> Power for Gas Solenoid	<input type="checkbox"/> Tie in WWCP
<input checked="" type="checkbox"/> Power for Shunt Trip	



<b>TORQUE:</b>	<b>FIELD WIRING:</b>
TERMINAL BLOCKS = 8 LB.IN	USE MINIMUM
GROUNDING BLOCKS = 8 LB.IN	60° Copper Wire

<b>LABEL DESCRIPTION</b>	
EF	Exhaust Fan
SF	Supply Fan
ST	Starter
OL	OverLoad
C	Contactor
G	Ground
S	Switch
LT	Light
FS	Fire Switch
R	Relay
AF	Air Flow Switch
SV	Gas Solenoid
STB	Shunt Trip Breaker
D	Damper
PB	PushButton
EC	Evap Cooler
TS	Temperature Sensor
TC	Temperature Controller
---	FACTORY WIRING
---	FIELD WIRING
ALL WIRING 90°C 14 GA. UNLESS SPECIFIED	
<b>WIRE COLOR</b>	
BK	black
BL	blue
BR	brown
OR	orange
PR	purple
RD	red
YW	yellow
WH	white

**NOTES:**  
DRAWING SHOWN DE-ENERGIZED AT L1 (TERM. #H1), W/ FIRE SYSTEM ARMED (NON-FIRE MODE). (NORMAL OPERATION, R1 & R2 ARE ENERGIZED) IF WALL MOUNTED PREWIRE, OR FIELD INSTALLED FIRE SYSTEM, THE FIRE SYSTEM MICROSWITCHES MUST BE FIELD WIRED.

**LISTED** COMMERCIAL APPLIANCE OUTLET CENTER  
438M ELECTRICAL RATINGS: 120V, 1PHASE, 60HZ, 15A  
FILE #E200616

### TEMPERATURE INTERLOCK CALIBRATION

- PRESS SET BUTTON. 'S1' WILL APPEAR.
- PRESS UP OR DOWN BUTTON TO NAVIGATE TO SET POINT THAT YOU WISH TO ADJUST ('S1', 'S2', OR 'S3').
- PRESS SET BUTTON TO VIEW CURRENT SET POINT. PRESS UP OR DOWN BUTTON TO ADJUST AND PRESS SET BUTTON TO STORE VALUE.
- PRESS SET + DOWN BUTTONS TOGETHER TO EXIT OR WAIT 1 MINUTE.
- CHECK SYSTEM OPERATION BEFORE MAKING ADDITIONAL ADJUSTMENTS.

Wiring Diagram Code: