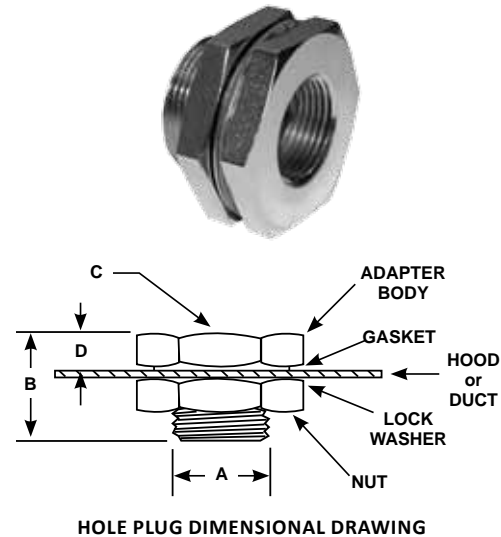
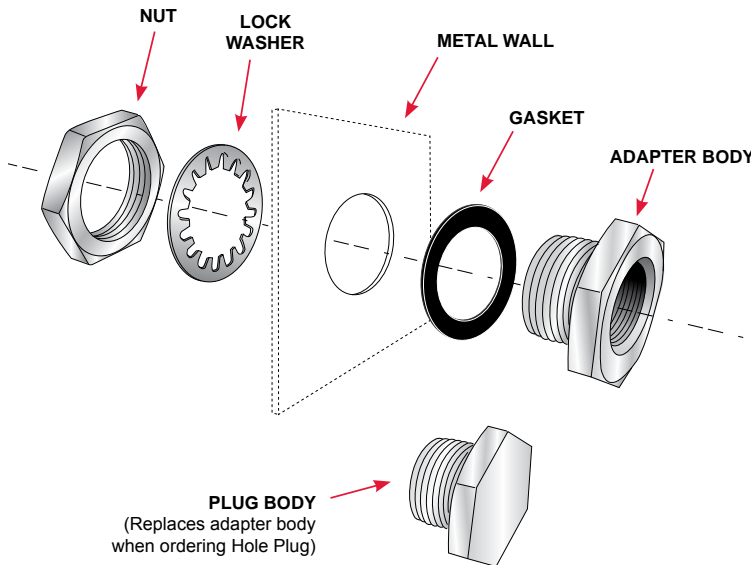


# QUICK-TITE FITTINGS



- USED AS THROUGH-PENETRATION FITTINGS IN COOKING HOOD SYSTEMS
- PROVIDES STRUCTURAL SUPPORT FOR THE SYSTEM PIPING, IMPROVING SYSTEM INTEGRITY AND REDUCING THE NEED FOR ADDITIONAL PIPE HANGERS
  - PRESSURE TESTED TO 5000 PSI
  - IN CONFORMANCE WITH THE REQUIREMENTS OF NFPA STANDARD NO. 96
- MANUFACTURED OF SOLID MACHINED STEEL FOR SUPERIOR STRENGTH AND HIGH TEMPERATURE RESISTANCE
- ATTRACTIVE CHROME PLATED FINISH MAXIMIZES CORROSION RESISTANCE
- INTERNAL PIPE THREADS PERMIT EASY COUPLING OF THE PIPES AT THE POINT OF PENETRATION



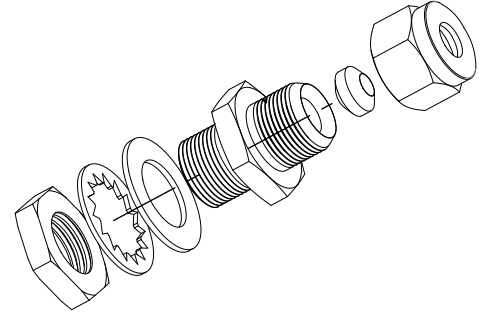
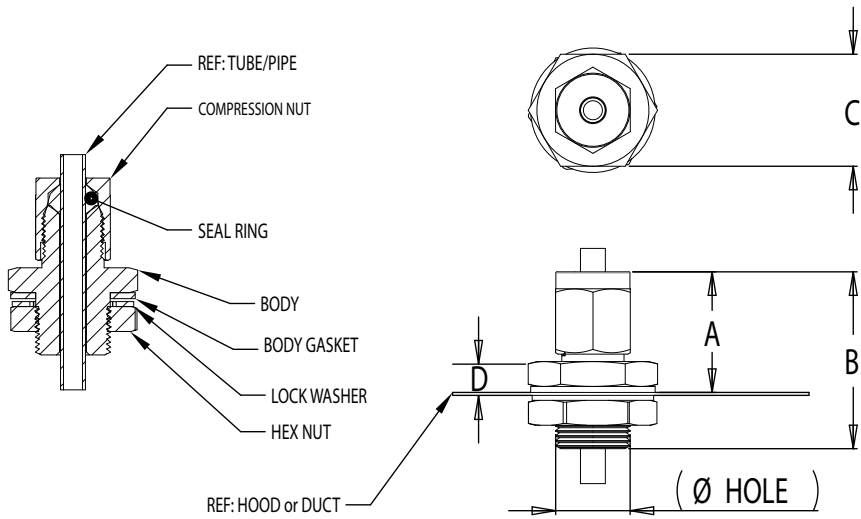
## STANDARD FITTINGS

| MODEL NO. | QUICK-TITE FITTING                        | HOLE CUT OUT SIZE (A)           | WT. PER FITTING | B    | C        | D   | CASE QTY |
|-----------|---|---------------------------------|-----------------|------|----------|-----|----------|
| F11-0014  | 1/4" (6mm) Pipe                           | 3/4" (19mm) to 7/8" (22mm)      | .15lb (.07kg)   | .88  | 1.13 HEX | .25 | 24       |
| F11-0038  | 3/8" (10mm) Pipe w/<br>1-1/8" (29mm) Hole | 1-1/8" (29mm) to 1-5/16" (33mm) | .36lb (.16kg)   | 1.00 | 1.50 HEX | .31 | 24       |
| F11-0038A | 3/8" (10mm) Pipe w/<br>7/8" (22mm) Hole   | 7/8" (22mm) to 1" (25mm)        | .21lb (10kg)    | 1.00 | 1.50 HEX | .31 | 24       |
| F11-0012  | 1/2" (13mm) Pipe                          | 1-1/8" (29mm) to 1-5/16" (33mm) | .35lb (.16kg)   | 1.14 | 1.50 HEX | .31 | 24       |
| F11-0034  | 3/4" (19mm) Pipe                          | 1-3/8" (35mm) to 1-9/16" (40mm) | .52lb (24kg)    | 1.25 | 1.88 HEX | .31 | 12       |
| F11-0100  | 1" (25mm) Pipe                            | 1-5/8" (41mm) to 1-7/8" (48mm)  | .852lb (39kg)   | 1.5  | 2.25 HEX | .38 | 8        |
| F11-0114  | 1-1/4" (32mm) Pipe                        | 2" (51mm) to 2-1/2" (64mm)      | .97lb (.44kg)   | 1.5  | 2.5 HEX  | .38 | 8        |
| F11-0112  | 1-1/2" (38mm) Pipe                        | 2-1/4" (57mm) to 2-1/2" (64mm)  | 1.18lb (.54kg)  | 1.5  | 2.75 HEX | .38 | 8        |

## CORNER PULLEYS

|           |                      |                |     |          |     |   |
|-----------|----------------------|----------------|-----|----------|-----|---|
| F11-0012A | 7/8"-18 x 1/2" NPT   | .97lb (.44kg)  | 1.5 | 2.5 HEX  | .38 | 8 |
| F11-0012B | 15/16"-20 x 1/2" NPT | 1.18lb (.54kg) | 1.5 | 2.75 HEX | .38 | 8 |

# QUICK-TITE FITTINGS



## COMPRESSION FITTINGS

| MODEL NO.    | QUICK-TITE FITTING                  | HOLE CUT OUT SIZE (A)           | WT. PER FITTING | B    | C        | D   | CASE QTY |
|--------------|-------------------------------------|---------------------------------|-----------------|------|----------|-----|----------|
| F15-250T     | 1/4" (6mm) Tube                     | 3/4" (19mm) to 7/8" (22mm)      | .15lb (.07kg)   | .88  | 1.13 HEX | .25 | 24       |
| F15-375T     | 3/8" (10mm) Tube                    | 1-1/8" (29mm) to 1-5/16" (33mm) | .36lb (.16kg)   | 1.00 | 1.50 HEX | .31 | 24       |
| F15-500T250P | 3/8" (10mm) Tube & 1/4" (6mm) Pipe  | 7/8" (22mm) to 1" (25mm)        | .21lb (10kg)    | 1.00 | 1.50 HEX | .31 | 24       |
| F15-625T375P | 5/8" (16mm) Tube & 3/8" (10mm) Pipe | 1-1/8" (29mm) to 1-5/16" (33mm) | .35lb (.16kg)   | 1.14 | 1.50 HEX | .31 | 24       |
| F15-500EMT   | 1/2" (12mm) EMT Conduit             | 1-3/8" (35mm) to 1-9/16" (40mm) | .52lb (24kg)    | 1.25 | 1.88 HEX | .31 | 12       |
| F15-500P     | 1/2" (12mm) Pipe                    | 1-5/8" (41mm) to 1-7/8" (48mm)  | .852lb (39kg)   | 1.5  | 2.25 HEX | .38 | 8        |
| F15-750P     | 3/4" (19mm) Pipe                    | 2" (51mm) to 2-1/2" (64mm)      | .97lb (.44kg)   | 1.5  | 2.5 HEX  | .38 | 8        |
| F15-1000P    | 1" (25mm) Pipe                      | 2-1/4" (57mm) to 2-1/2" (64mm)  | 1.18lb (.54kg)  | 1.5  | 2.75 HEX | .38 | 8        |

## QUICK-TITE® HOLE PLUGS



- QUICK-TITE HOLE PLUGS ARE DESIGNED TO PROVIDE A POSITIVE SEAL OR PATCH FOR EXISTING PENETRATIONS THAT ARE NO LONGER REQUIRED
- IDEAL TO REPAIR UNWANTED HOLES AS A RESULT OF CHANGES TO A FIRE PROTECTION SYSTEM, MOVING THE LOCATION OF A FIRE SUPPRESSION NOZZLE, DRILLING A HOLE AT THE WRONG LOCATION OR USING A HOOD/DUCT WITH PREVIOUSLY DRILLED HOLES
- QUICK-TITE HOLE PLUGS ARE EASY TO INSTALL AND PROVIDE AN ATTRACTIVE, FINISHED APPEARANCE TO MATCH FITTINGS
- AVAILABLE FOR FIVE STANDARD HOLE SIZES - 3/4", 7/8", 1-1/8", 1-3/8", AND 1-5/8"

| MODEL NO. | HOLE SIZE                       | WT. PER HOLE PLUG | CASE QTY |
|-----------|---------------------------------|-------------------|----------|
| F12-0034  | 3/4" (19mm) to 7/8" (22mm)      | 3.2 oz (91g)      | 24       |
| F12-0078  | 7/8" (22mm) to 1" (25mm)        | 4.8 oz (136g)     | 24       |
| F12-0118  | 1-1/8" (29mm) to 1-5/16" (33mm) | 7.2 oz (204g)     | 12       |
| F12-0138  | 1-3/8" (35mm) to 1-9/16" (40mm) | 12.8 oz (363g)    | 12       |
| F12-0158  | 1-5/8" (41mm) to 1-7/8" (48mm)  | 21.6 oz (612g)    | 6        |

