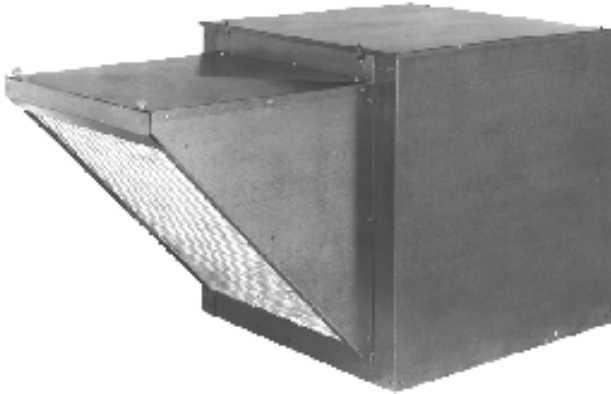




COOK



Loren Cook Company certifies that the KSPD shown herein is licensed to bear the AMCA Seal. The ratings shown are based on tests and procedures performed in accordance with AMCA Publication 211 and comply with the requirements of the AMCA Certified Ratings Program.

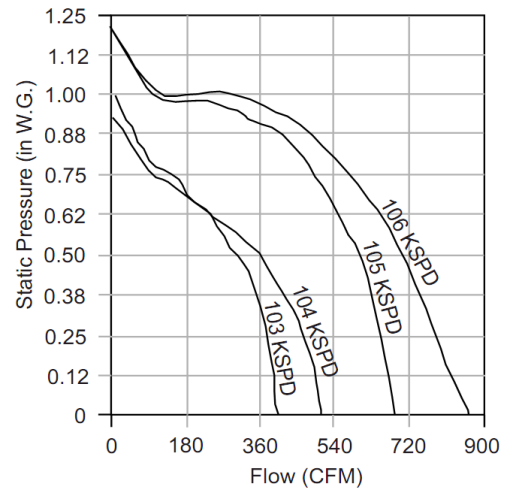
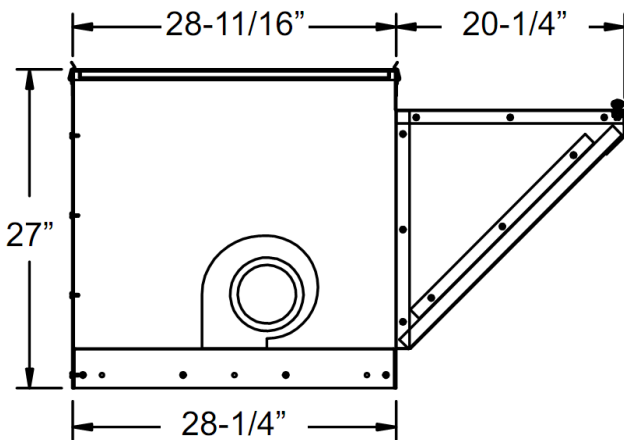


Type KSPD is furnished standard with UL 705 listing (Power Ventilator/ZACT).



Type KSPD is furnished standard with cUL listing (Power Ventilator).

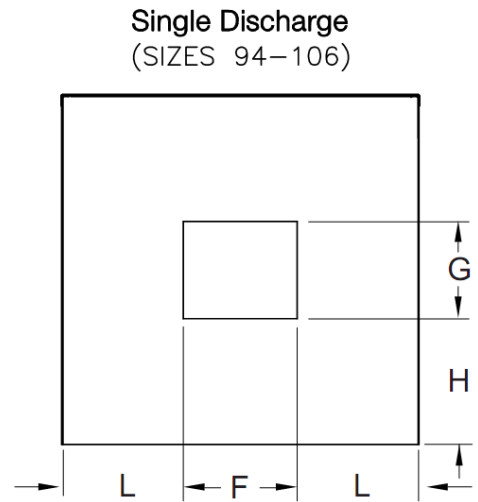
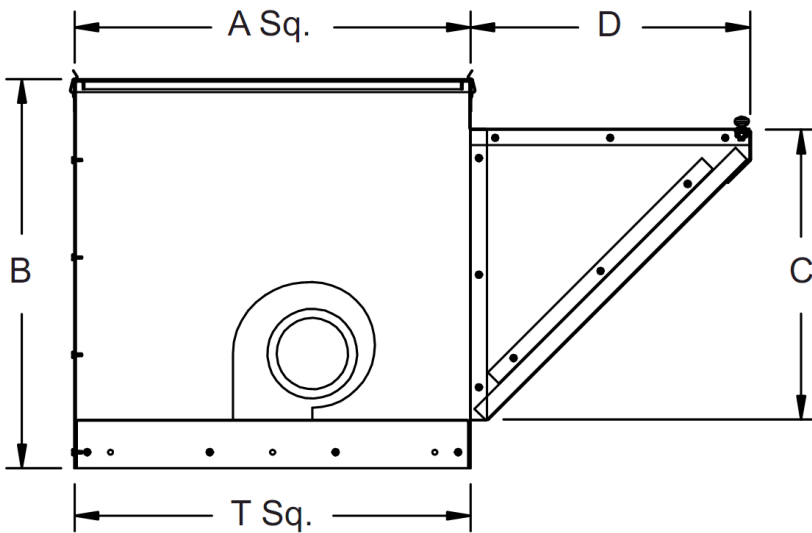
103 - 106 KSPD



| Model No. | Max Watts/BHP | RPM | 0.000" SP | | 0.125" SP | | 0.250" SP | | 0.375" SP | | 0.500" SP | | 0.625" SP | | 0.750" SP | |
|-----------|---------------|-------|-----------|------|-----------|------|-----------|------|-----------|------|-----------|------|-----------|------|-----------|------|
| | | | CFM | Sone | CFM | Sone | CFM | Sone | CFM | Sone | CFM | Sone | CFM | Sone | CFM | Sone |
| 103 | 245 | 960 | 401 | 3.7 | 370 | 3.3 | 365 | 3.3 | 354 | 3.3 | 303 | 3.6 | | | | |
| 104 | 350 | 1,135 | 507 | 4.6 | 499 | 4.3 | 465 | 4.1 | 415 | 3.9 | 355 | 3.8 | | | | |
| 105 | 322 | 1,479 | 682 | 6.7 | 673 | 6.5 | 655 | 6.5 | 629 | 6.4 | 593 | 6.2 | 546 | 5.9 | 490 | 5.7 |
| 106 | 400 | 1,646 | 861 | 8.6 | 816 | 8.3 | 780 | 7.9 | 744 | 7.5 | 702 | 7.0 | 644 | 6.3 | 571 | 5.6 |



Bottom Discharge Duct Connection Dimensions



KSPD Discharge Dimension Data

| Model | A Sq. | B | C (Height x Width) | D | T Sq. | Material Gauges | | Approx. Ship Wt. Lbs. |
|----------------|----------|----|-----------------------|--------|--------|-----------------|------|-----------------------------|
| | | | | | | Housing | Base | |
| 103 - 106 KSPD | 28-11/16 | 27 | 21 x 22-1/4 | 20-1/4 | 28-1/4 | 18 | 16 | 210 |

KSPD Dimension Data for Outlet

| Size | F | G | H | J | K | L |
|---------|-------|--------|---------|---|-------|---------|
| 103-106 | 3-7/8 | 8-9/16 | 9-13/16 | - | 6-1/4 | 12-3/16 |