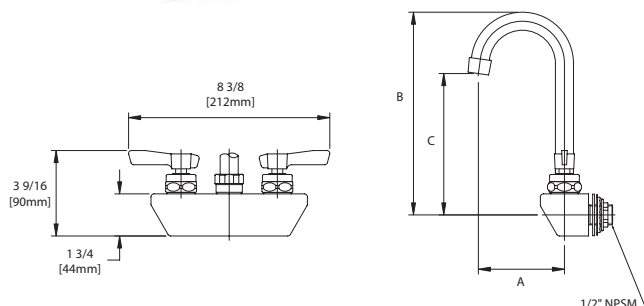


Encore® 4" (102mm) Wall Mount Faucet
with Swivel Gooseneck Spout and
Lever Handles

KL45-4x0x-SE1 Series

KL45-4100-SE1	3" Spout, Ceramic Valves
KL45-4000-SE1	3" Spout, Compression Valves
KL45-4102-SE1	6" Spout, Ceramic Valves
KL45-4002-SE1	6" Spout, Compression Valves
KL45-4101-SE1	8" Spout, Ceramic Valves
KL45-4001-SE1	8" Spout, Compression Valves



Dimensions shown in inches (mm) are for reference only
and are subject to change.

1/2" NPSM Male Inlets

Operating Temperature: 40-180°F (5-83°C)

Operating Pressure: 15-125psi

Note: 1-1/8" (29mm) holes for backsplash are
recommended to accommodate 1/2" supply nipples

Approximate shipping weight - 5 lbs

Warranty - 2 years parts

Solid heavy duty cast body is specification and commercial
quality for hand sinks.

Commercial Quality Features

- Swivel gooseneck spout design
- ADA-compliant lever handles
- Built-in check valves to prevent cross-flow and back-flow
- Leak proof double O-ring spout design
- Stainless steel spout

SANIGUARD® Product Protection

- Permanently incorporated on all touch points of Encore plumbing fixtures
- Inorganic, silver ion technology inhibits growth of common bacteria, yeasts, mold and fungi, minimizes cross-contamination

SPECIFICATIONS:

Wall Mount Faucet to be Encore KL45 Series
in the following configuration:

_____	KL45-4100-SE1	3" Spout, Ceramic Valves
_____	KL45-4000-SE1	3" Spout, Compression Valves
_____	KL45-4102-SE1	6" Spout, Ceramic Valves
_____	KL45-4002-SE1	6" Spout, Compression Valves
_____	KL45-4101-SE1	8" Spout, Ceramic Valves
_____	KL45-4001-SE1	8" Spout, Compression Valves

Faucet body to be constructed of polished chrome plated brass with total
lead content less than 0.25% by weighted average. Lever handles to be
incorporated with SANIGUARD treatment. Supply inlets to be 4" on center.
Valves to be 1/4-turn with integral check valve to prevent cross-flow and
back-flow. Spout to be stainless steel swivel gooseneck style with leak proof
double O-ring seal design. Color coded temperature indexes shall meet
international standards. 2.2gpm aerator @ 60psi standard with full flow
stream bubbler screen spout tip.

Model No.	A	B	C
KL45-4100-SE1	3-1/2" (89mm)	8-3/16" (208mm)	5-15/16" (151mm)
KL45-4000-SE1	3-1/2" (89mm)	8-3/16" (208mm)	5-15/16" (151mm)
KL45-4102-SE1	6" (152mm)	9-3/4" (248mm)	6" (152mm)
KL45-4002-SE1	6" (152mm)	9-3/4" (248mm)	6" (152mm)
KL45-4101-SE1	8-1/2" (216mm)	12-5/8" (321mm)	7" (178mm)
KL45-4001-SE1	8-1/2" (216mm)	12-5/8" (321mm)	7" (178mm)

For a complete list of available options for KL45-4000 Series,
see product configurator on reverse.

COMPLIES WITH:

ASME A112.18.1-2005
CSA B125.1-05
NSF/ANSI 61/9, ANNEX G
SECTION 116875 OF THE
CALIFORNIA HEALTH & SAFETY CODE
(COMMONLY KNOWN AS AB1953)
VERMONT ACT 193
UNIFORM PLUMBING CODE



Faucet Configuration for KL45-4000 Series

