

48" Low Profile LED Surface Mount Light for Cooler/Freezer Installation Instructions

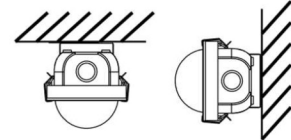
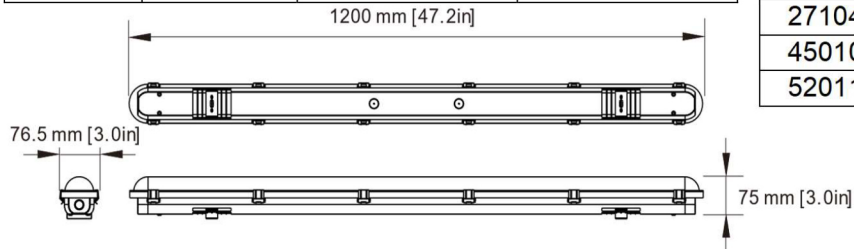
WARNING

- Installation must be performed by a licensed electrician per local codes.
- Make sure electrical supply power is shut off at the circuit breaker before starting luminaire installation or servicing.
- Review installation instructions before beginning installation. Failure to follow instructions may result in damage to the luminaire or personal injury.

PRODUCT INFORMATION

Voltage	Rated Power	Controller Method	Operating Temperature
120-277~Vac	65W	ON/OFF	-13°F to 104°F (-25°C to 40°C)

Parts List		
Part No.	Description	Qty.
LED-440077	4ft Luminaire	1
LED-440079		
271041	ST4x20mm Screws	4
450105	Wall Anchors	4
520111	Mounting Bracket	2



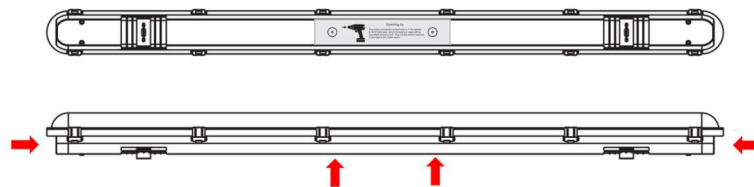
PREPARATION

Equipment needed:

- 22.2mm (7/8in) hole saw with depth stop
- Phillips' head screwdriver
- Electric Drill

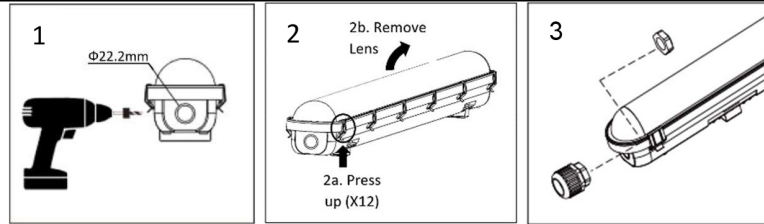
Keep the following in mind when selecting a mounting location:

- Verify that input and output wiring can be routed to the selected location.
- Select a mounting location that is free from frequent mechanical impacts.
- Verify there is proper clearance on the back of the mounting surface for the mounting screws.
- **Disclaimer:** Drill holes at your own risk. Holes must be drilled only at designated locations (marked below with arrows). Drilling in any other location may result in damage to the luminaire.



1. Drill the conduit hole through the body of the luminaire by using a 22.2mm (7/8in) hole saw attachment. Care should be taken that the hole saw does not contact with any of the internal components. (Additional hole may be drilled for connecting lights in series.)
2. Access the interior of the luminaire: 1a. press the 12 clips up to unclasp 2b. remove the lens.
3. Install UL approved electrical connection fittings on the luminaire using the drilled hole.

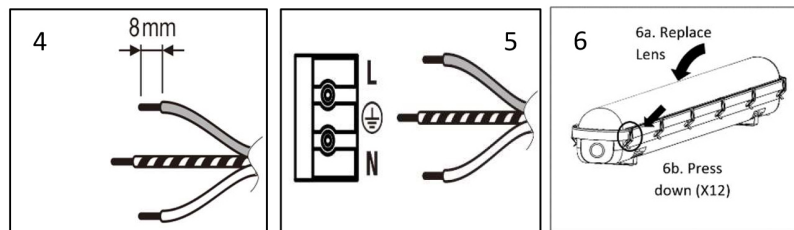
48" Low Profile LED Surface Mount Light for Cooler/Freezer Installation Instructions



WIRING

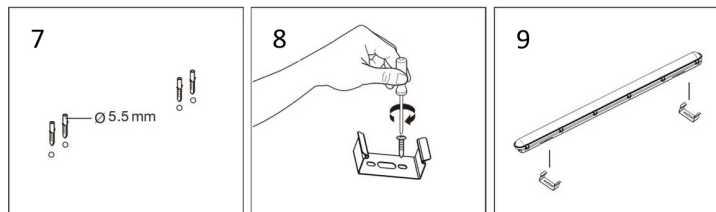
DISCONNECT POWER SOURCE BEFORE STARTING ELECTRICAL WORK.

4. Strip power wires 8mm (0.32in) from the tip of the wire.
5. Pressing down on the tabs in the top of the wire connector, connect the hot wire to the load socket (L), connect the ground wire to the \oplus socket, connect the neutral wire to the neutral socket (N). (Connector may be used to wire additional lights in series.)
NOTE: Maximum wire gauge that can be used in the wire connector: 14AWG
NOTE: Maximum number of luminaires connected in series: 17 luminaires
6. Reinstall the lens: 6a. replace lens on luminaire housing and press down on the 12 clips to clasp the lens to the housing. Check that all clips are firmly reinstalled to ensure watertight seal.



MOUNTING

7. Determine the position of the light on the mounting surface. Drill 6.0mm (0.24in) diameter holes. Insert the 5.5mm provided wall anchors into the holes in the mounting surface.
8. Lock the two provide fixed mounting brackets to the wall anchors with provided ST4x20mm screws.
9. Clip the luminaire into the mounting brackets.





48" Low Profile LED Surface Mount Light for Cooler/Freezer Installation Instructions

WARNING:

1. Supply current and wattage must not exceed the rated values on the specification documents.
2. Incorrect polarity or improper wiring may cause personal injury and/or damage to the product. It is recommended that an electrical technician, professional, or similarly qualified individual finish wiring.
3. To avoid electrical shock risk, all failures should be examined by a qualified technician.
4. Environmental suitability, including but not limited to water resistance, varies based on product design. Unless explicitly noted, products are to be installed in a location shielded from outdoor elements. Luminaire is not intended for outdoor installation. To avoid irreparable damage, refer to specification sheets to locate products in a proper environment.
5. Do not install products near an open flame or cover luminaire with insulation pads or other insulation materials. Do not install product in environment where conditions may exceed operating temperatures. Refer to product spec sheets/drawings for information about minimum and maximum operating temperatures.
6. Component Hardware is not liable for any injuries or damage caused due to improper wiring or installation.